

# PROFESSIONAL INSTALLER SERIES

## Quick Start Guide

**5MP IP NVR Models 104570/3/5/, 104580/1**

**4MP Hybrid DVR Models 105571/2/3**



Default username: admin

Default password:

This document describes the most simple and quick way to setup the Professional Installer Series NVR / DVR. Please refer to the user guide for safety information and the full list of features and how to use them.

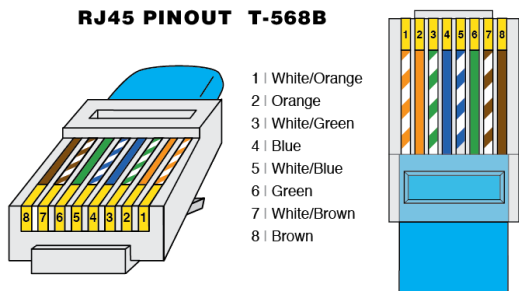
## Contents

1. Connecting the cables .....	2
2. Starting the DVR .....	3
3. IP Systems only - Connecting the IP cameras .....	3
4. Recording .....	4
5. Playback .....	4
6. Searching in playback .....	5
7. Backup to USB .....	6
8. Remote Viewing .....	7
9. VSS Mobile App .....	8

## 1. Connecting the cables

Connect the Power supply, mouse, VGA / HDMI, network cables and cameras.

For IP systems make sure the RJ45 connectors are wired according to the image below showing the international T-568A standard.

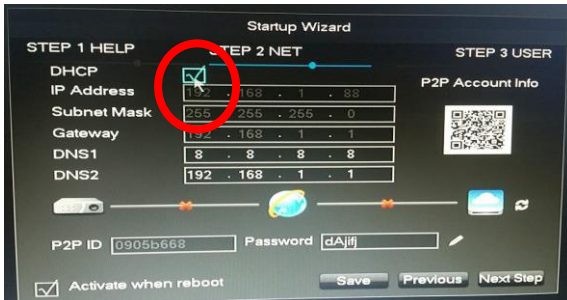


## 2. Starting the DVR

At Start up the following screen will appear, press Next Step.



In the next screen make sure DHCP is ticked and press SAVE.



Your Network should now be connected.

## 3. IP Systems only - Connecting the IP cameras

Plug in the cameras into the NVR. After about 1 minute your cameras should be automatically connected and showing on the NVR screen. This is using the Plug and Play feature which is why in the screen below you can see the connection is by MAC address and not IP address.



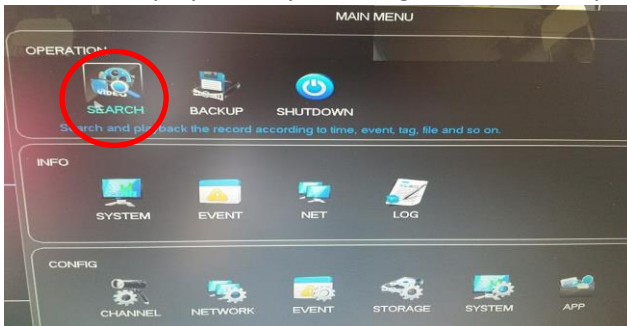
## 4. Recording

24/7 recording is started automatically. You can confirm recording is in progress by checking for the red circle in the camera images as below.

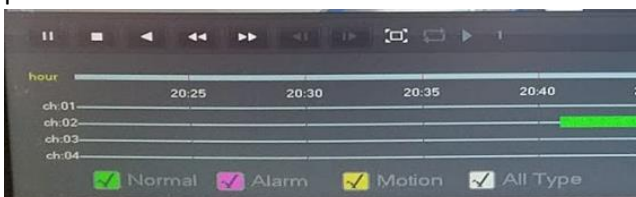


## 5. Playback

- a. Start play back by selecting search in the operation menu

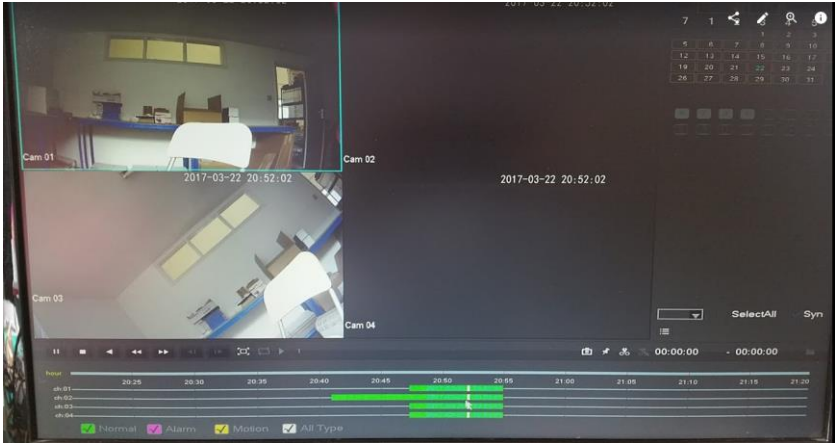


- b. At the bottom of the play back screen are the options to fast forward pause etc.



## 6. Searching in playback

- a. In the top right of the screen select the date and channels of interest



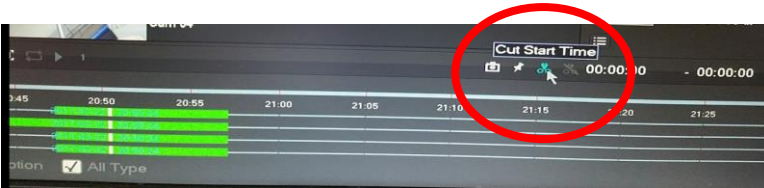
- b. Click in the coloured bar along the bottom of the screen to play the footage at the time of interest.



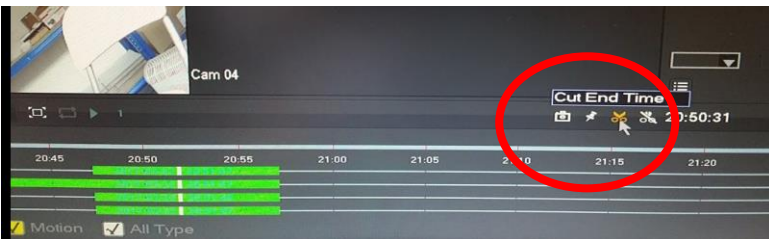
## 7. Backup to USB

Backing up video footage is a simple process that can be done from the Playback screen.

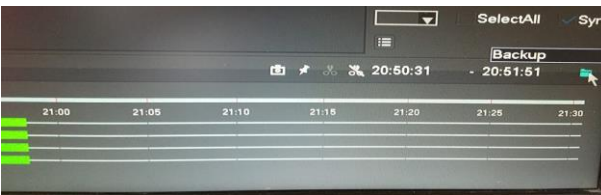
- a) Go to the time you want to start the backup from and press the scissor icon



- b) Go to the end time you desire and press the scissor icon again



- c) On the right side select the file icon



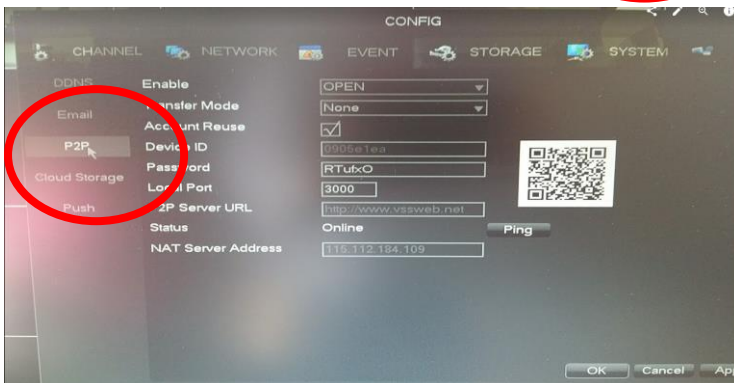
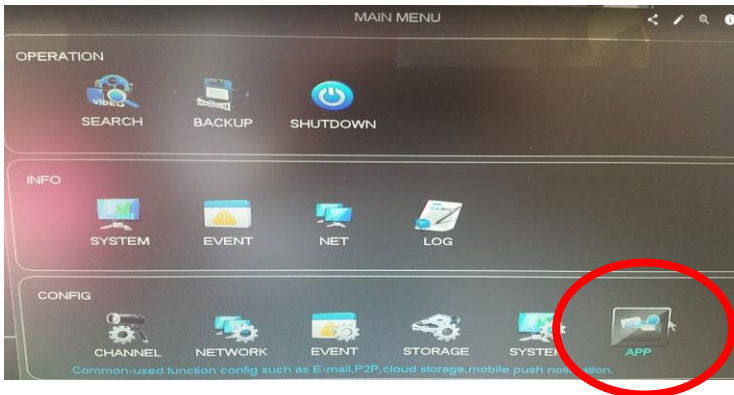
- d) Press start to back up to your USB Storage stick



## 8. Remote Viewing

Download the APP VSS Mobile onto your tablet or smartphone.

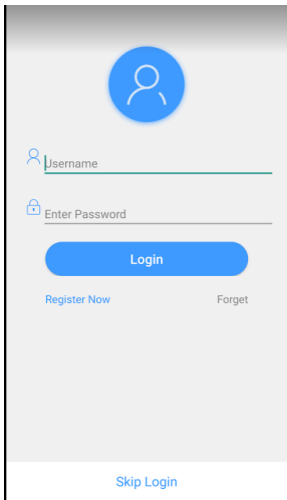
To find the QR Code for your DVR go to the Main Menu \ Config \App screen



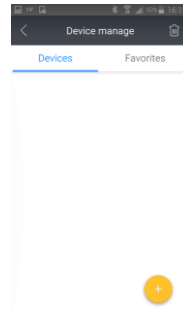
Now you are ready to scan the QR code with the VSS Mobile App on your smartphone

## 9. VSS Mobile App

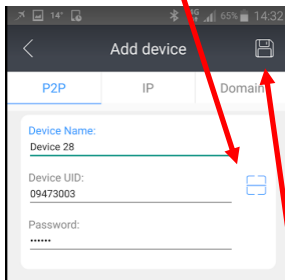
1. Create an account and login



2. Enter the Device Manage screen. In this screen press the yellow + followed by the green + in the bottom right corner.



3. Click on the QR code image and scan the QR code found earlier in the DVR software



Complete the rest of the form and the SAVE icon in the top right

4. You will now be able to view the remote system

