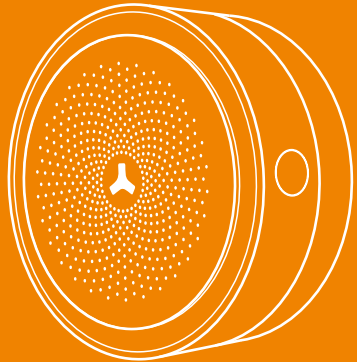


SP-S01 (PLUS) Indoor Siren User Manual



Description

This indoor siren designed with unique, concise and stylish appearance, which is suitable for different decoration style of home and office. It can be used as an indoor siren or work as a standalone alarm system. With low-consumption, stable function, strong anti-interference ability, it can effectively protect your life and property safety. Once any detector has been triggered, the control panel will receive the signal and be alarming immediately, the alarm indicator will deter the intruders as well. The siren adopts wireless transmission technology, it is a portable device and easy to install. This siren is widely used at home, villa, office, warehouse, shops...

Features

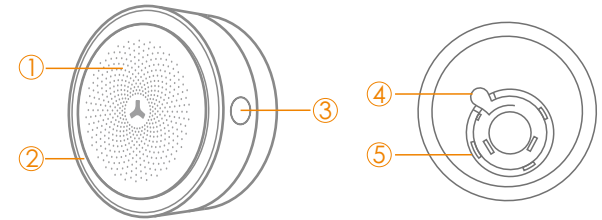
- Compact and fashionable design
- Wireless transmission technology, easy to install
- Different color LED indicator shows arm/disarm status
- Siren and strobe, more safety
- Built-in 600mAh/3.7V back-up battery can last 12 hours
- Keep connected with extended range up to 100M
- Changeable plug, meet different customer needs

Specifications:

- Voltage: AC110-240V 50/60Hz
- Max Current: 20mA/220V
- Power Rating: ≤5W(220V)
- Maximum standby time: ≥ 20h
- Back-up Battery: 600mAh/3.7V

- Wireless Receiving Distance: 100M(Open Area)
- Siren Volume: 90dB
- Working Temperature: -25°C -55°C
- Operating Humidity: ≤95%(Non-condensing)
- Housing Material: ABS
- Siren Measurement:
- Plug Type: EU/UK/US/AU

General View/LED Indication



1. Siren
2. LED Indication
 - Red LED Flashes On: Enrolling
 - Green LED On: System disarmed
 - Blue LED On: System armed in away mode.
 - Blue LED Flashes: System armed in stay mode
3. Enroll Button
4. Plug Handle (Press the handle, counter clockwise rotate to change the plug)
5. Interchangeable Plugs

Button Operation

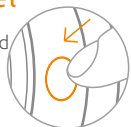
Function	Opcration	Status
Turn On Siren	Press Enroll Button for 3 seconds	The siren beeps once, the LED indicator light up in green color.
Turn Off Siren	Press Enroll Button for 10 times	The siren beeps once, the LED indicator blacks out.
Turn On/Off LED Indicator	Press Enroll Button for 5 times	The siren beeps once, the LED indicator blacks out or light up.
Turn On/Off Beeps Sound	Press Enroll Button for 3 times	The siren beeps once.
Enters into Enroll State	Press Enroll Button once	The siren beeps once, LED indicator light up in red.
Delete Enrolled Wireless Accessories	Press Enroll Button for 5 seconds	The siren beeps once.

Wireless Siren Network Mode

In network mode, the siren is a control panel based system which should be connected to the control panel. Once the enrollment is successful, when alarm panel is alarming, the wireless siren will hoot loudly and the red LED will be flashing continuously.

Connect Siren to the Alarm Panel

1. Press the enroll button, system beeps once and LED indicator light up in red. (System will exit automatically after 30 seconds or press the enroll button again to exit)



The siren beeps once, the red LED indicator flashes once, the enrollment is successful.



The siren beeps twice, the red LED indicator flashes once, the sensor has been enrolled before.



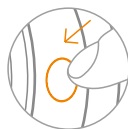
The siren beeps three times, the red LED indicator flashes once, the storage is full.

Standalone Alarm System Mode

As a standalone alarm system, all accessories should be enrolled to the siren. Any detector triggered will activate the siren immediately.

Connect Expandable Accessories to the Siren

1. Press the enroll button, system beeps once and LED indicator light up in red. (System will exit automatically after 30 seconds or press the enroll button again to exit)
2. Trigger the sensors (for example, press the arm button of the remote control, depart the transmitter and magnet of door sensor etc.)



The siren beeps once, the red LED indicator flashes once, the enrollment is successful.



The siren beeps twice, the red LED indicator flashes once, the sensor has been enrolled before.



The siren beeps three times, the red LED indicator flashes once, the storage is full.

2. Trigger the control panel tamper switch, the enrollment is successful.

the siren beeps once, the red LED indicator flashes once, enrolled successfully.

The siren beeps twice, the red LED indicator flashes once, the sensor has been enrolled before.

The siren beeps three times, the red LED indicator flashes once, the storage is full.

Note:Please do not trigger any other accessories during connecting with the control panel.

Clear All Enrolled Accessories

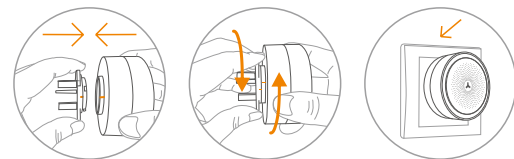
Press and hold the enroll button for 5 seconds until one beep is heard, all accessories will be cleared.

Work with Door Bell

The siren can work with the door bell, press the enroll button of the siren, then press the smart button to enroll, When a visitor presses a button, the bell rings in "Dingdong" sound to alert home owner.

Installation

1. Fix the the adapter on detector properly by rotating.
2. Power on



Notice:

1. The back-up is battery only for emergency use, AC power should be the main supply.
2. Do not hit or drop the indoor siren in case of damage component inside.
3. The strobe siren should be tested regularly, so that all fault can be fixed in time.