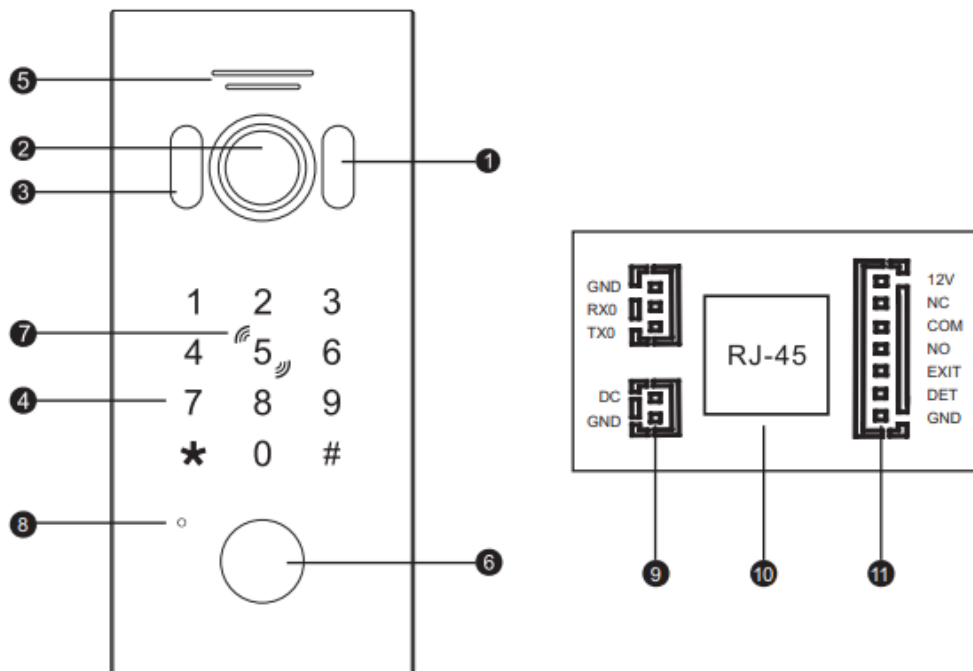




Video Intercom Outdoor Station User Guide



A quick tour of the Outdoor Station hardware



1	White light LED
2	Camera
3	Photosensitive resistance
4	Keypad
5	Speaker
6	Call button
7	Card area
8	Microphone
9	12V~15V DC in
10	RJ45 interface with PoE
11	Lock control

Technical Parameters

- **Viewing angle: 120°**
- **Resolution: 2MP**
- **Night Vision: White Light LED (120°)**
- **Operation Voltage: 12V DC input or PoE**
- **Working Temperature: -20° to +50°C**

Lock Control Interface – Connector J1

Pin	Definition	Function
1	Unused (Brown)	Unused
2	NC (Orange)	Relay Normally Closed Contact
3	COM (Green)	Relay Common Contact
4	NO (Yellow)	Relay Normally Open Contact
5	Exit (Black)	Exit Button
6	Det (White)	Door Open Status Detection
7	GND (Red)	Ground

Network Setting

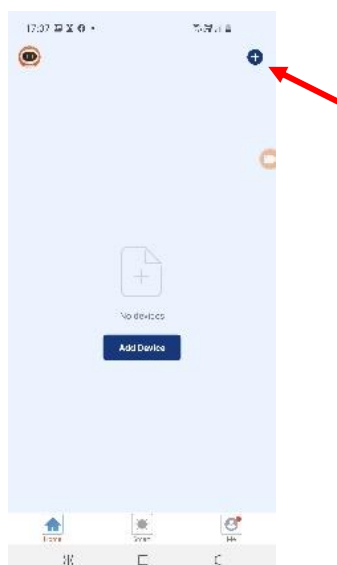
Download the rok Smart Home app from the App store or Google Play store and install it on your iPhone or Android Phone. When installing the rok Smart Home App please create an account.



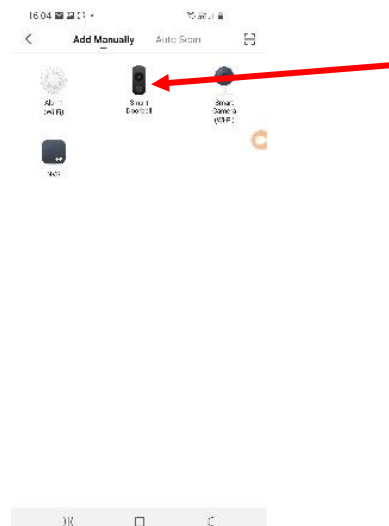
Connecting the outdoor station to the rok Smart Home App

The rok outdoor Station is powered by 48V POE. Connect the rok Outdoor station into a POE switch using the RJ45 connector on the rear of the unit.

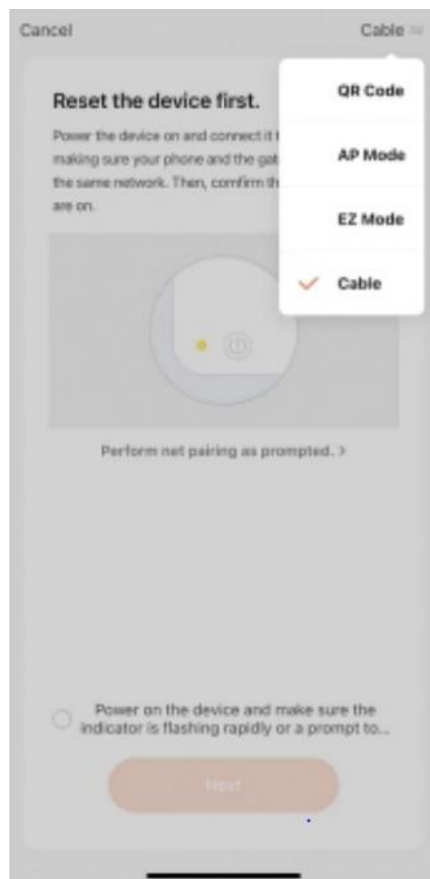
1. In the rok app Press the blue + in the top right corner.



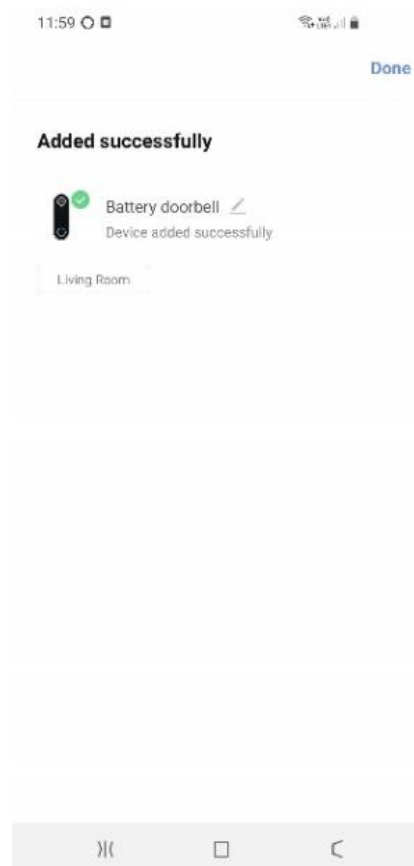
2. Select **Smart Doorbell**



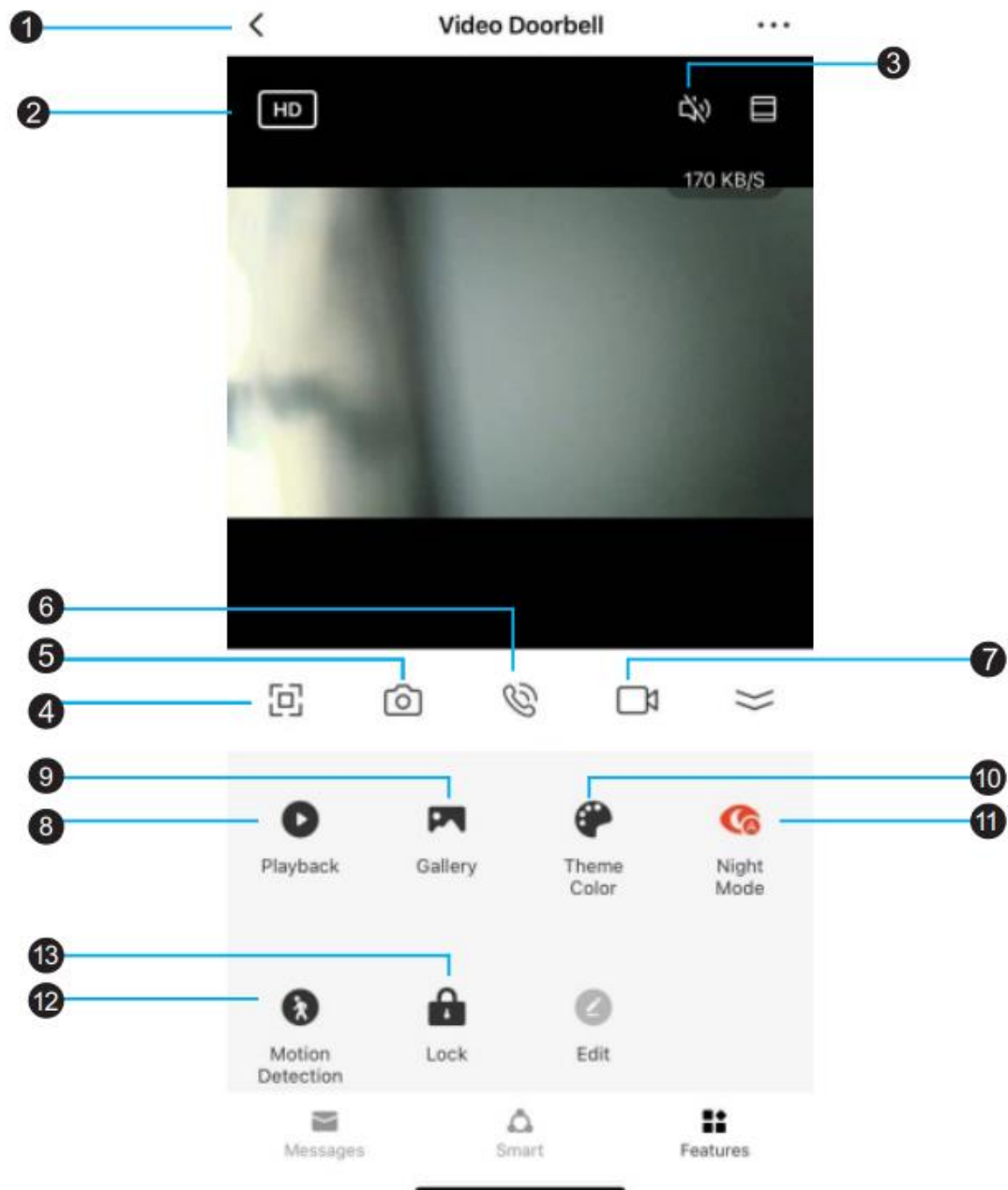
6. Choose “Cable” on top right, mobile and video doorbell connect to the same network



9. The rok App will search for the doorbell and add it to the App. **Press Done**



Rok Smart Home Video Intercom App Functions



1. **Back:** click this button to exit the screen.
2. **Resolution:** tab to switch between HD and SD
3. **Loudspeaker:** You can hear the visitor when this is turned on. During monitoring, you cannot talk.
4. **Full Screen:** display the image in full screen
5. **Capture:** during a call or monitoring, click this button to capture the image of the current screen.
6. **Microphone:** During a call, click this button to turn on the microphone and speak with

your visitors.

7. **Record:** During a call or monitoring, click this button to record the current video.
8. **Playback:** This feature is for future product development
9. **Album:** During a call or monitoring, manually capture photos or manually recorded videos can be viewed here.
10. **Theme Ccolour:** Changes the App theme colour.
11. **Infrared night vision switch:** as the intercom uses a white LED to give colour night vision this option is no longer used.
12. **Motion Detection:** For future development
13. **Intercom Unlock Button:** During a call or Monitoring, click this button to open the door.

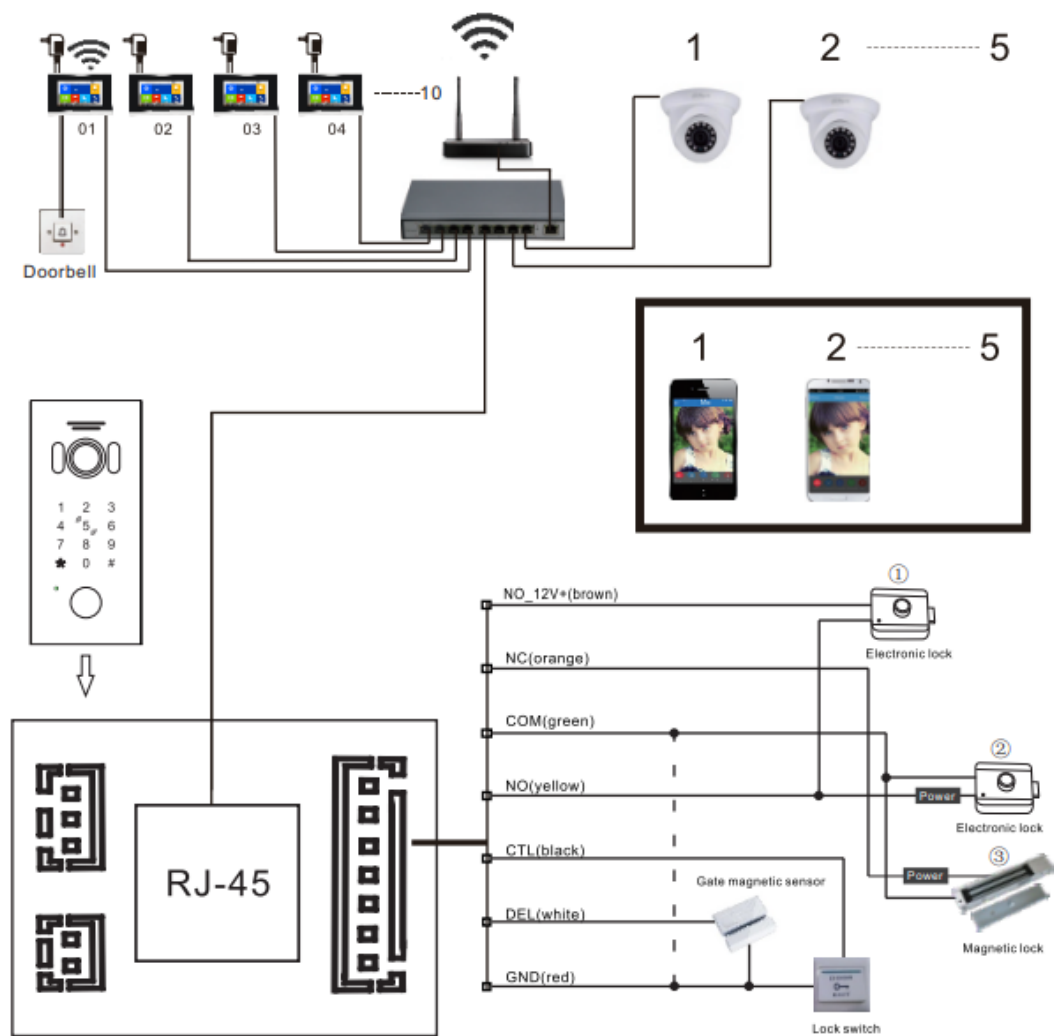
Administrator Operation

1. Default Settings:
 - Default Admin Password: 999999
 - Default Unlock Password:123456
 - The default door opening method is card opening
 - The default unlock time is 2 seconds
 - The unlock password is enabled by default
2. Enter Admin Mode:
 - *+Admin Password+#
 - In standby mode, press *+Admin Password+# to enter admin mode. The Intercom will beep twice and the call button will flash slowly.
 - Admin mode will time out after 30 seconds of no activity.
 - 4 beeps indicates incorrect operation.
 - Press * button to go back a level.
- 2.1 Modify Unlock Password:
 - Whilst in admin mode:
 - 0 +11 +#New Password +# +Confirm Password +#
- 2.2 Modify Admin Password:
 - Whilst in admin mode:
 - 0+77+# New Admin Password+#+Confirm Password+#
- 2.3 Factory Reset:
 - Whilst in admin mode:
 - 0+99+# - intercom beeps once.
 - This will not delete user cards, or reset passwords
- 2.4 Modify unlock time:
 - Whilst in admin mode:
 - 4+000~150 (unlock time) +# Two beeps confirms success
- 2.5 Add a Master Card:
 - Whilst in admin mode:
 - 7+# to enter add master card mode., the first card registered will be the "Add Master Card".
 - The second card registered will be the "Delete Master Card" card.
 - Only 2 master cards are allowed.

Managing User Cards

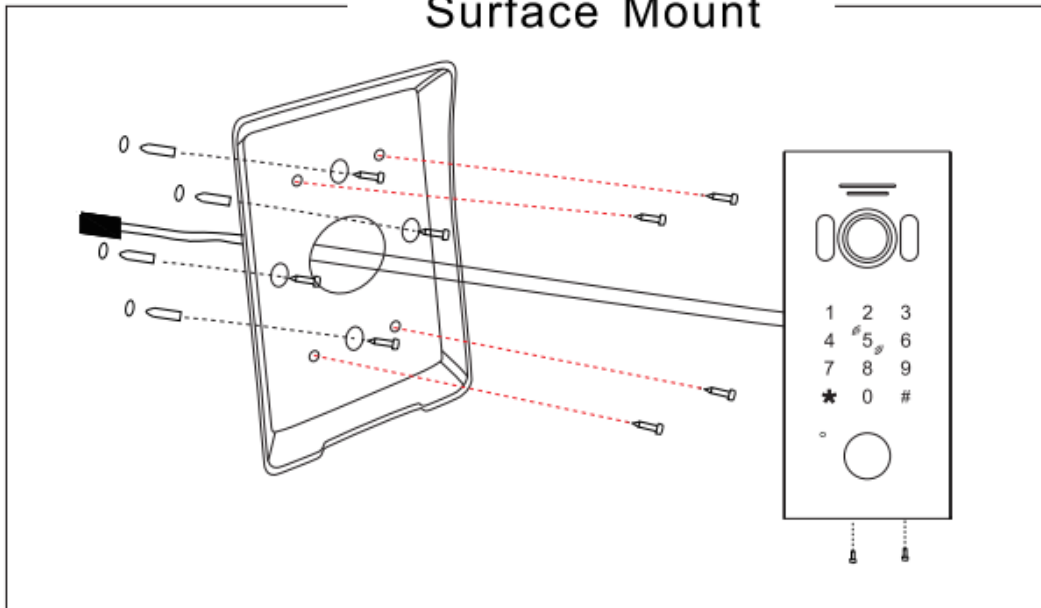
1. Add User Card
 - 1.1 In standby mode: Swipe Add Master Card 3 times
 - 1.2 Swipe blank RFID cards. Intercom beeps twice to indicate successRepeat for each User Card
 - 1.3 When all user cards added swipe Add Master Card
2. Delete User Cards
 - In standby mode: Swipe Delete Master card 3 times
 - 2.1 Swipe User Card. Buzzer will beep 7 times to indicate success.

Wiring Diagram



Installation Diagram

Surface Mount



Flush Mount

