



# Content

- 01 Wi-Fi Alarm System / Content
- 02 Features
- 03 LED Indication / Button Operation
- 05 Door & Window sensor
- 06 Door & PIR Motion Sensor

## Apps Setup

- 11 Mobile App Download / Creat an Account
- 12 Add Device
- 14 Alarm System Interface
- 15 Quick Alarm Operation

## Accessories Management

- 16 Add Accessories
- 17 Delete Accessories
- 18 Zone Setup
- 19 Device Setup
- 21 Other Apps Setting
- 22 Smart Secene
- 24 Specifications
- 26 Frequently Asked Questions

## Wi-Fi Alarm System

This Wi-Fi alarm system is a plug & play device, well designed with cellular and pure white case. It is totally through Wi-Fi transmission with fast speed and no need any extra fee. It can expand to 40pcs wireless accessories and 10pcs remote controls. The intuitive different color LEDs light up for status of arming, disarming, alarming. The all-in-one mobile App"Smart Life"allows users to remotely control the system anytime, anywhere. And this system is compatibal with Tuya Smart, Amazon Alexa and Google Assistant.

## Content

Open the package, and contact the supplier if there's anything missing.



Control Panel



Remote Control



PIR Motion & Door Sensor



Plug (Replaceable)



Plastic Plugs & Screws



User Manual



## Features



wireless  
DIY installation



3 colors  
LED indicator



Entry/  
exit delay



90dB siren



10 Remote control  
names



40 zones  
names



2 hours back-  
up battery

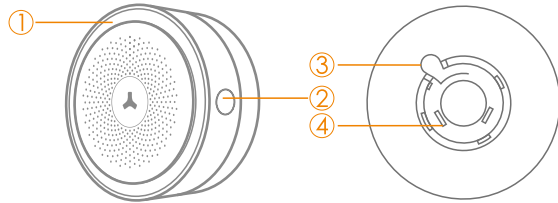


Multiple users  
& device  
management



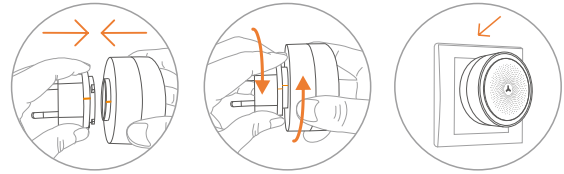
FHSS  
Frequency-hopping  
Spread Spectrum

## LED Indication



No	Name	Function
1	LED Backlight	<b>Flashes once in red:</b> ready for configuration with new accessories. <b>Keeps On in green:</b> System disarmed. <b>Keeps On in blue:</b> System armed. <b>Keeps flashing in blue:</b> System armed in Home Mode. <b>Flashes quickly:</b> Wi-Fi connection lost.
2	Function Button	<b>Press once:</b> start the enrollment with new accessories. <b>Press and hold for 5 seconds until one beep heard (or press 3 times):</b> start the setup with the App. <b>Press 10 times:</b> turn off the system. <b>Press and hold for 3 seconds:</b> turn on the system. <b>Press 5 times:</b> reset the system to factory settings. <b>Press and hold for 7 seconds until one beep heard:</b> delete all the enrolled accessories
3	Plug Handle	Press the handle, to fix the plug. (See picture)
4	Interchangeable Plugs	Change the plugs suitable for your country.

## Installation



### Note:

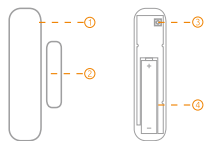
1. The back-up battery is only for emergency use, AC power should be the main supply.
2. Do not hit or drop the device in case of damage component inside.
3. The system should be tested regularly, so that all fault can be fixed in time.



## Door & Window sensor

The Door/Window Sensor can be installed on doors, windows and any other objects that open and close.

The tamper protection ensures that sabotage attempts to move the sensor will result in an alarm activation.

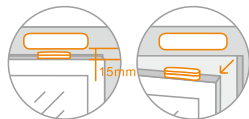


1. Transmitter
2. Open-close magnet
3. Tamper Switch
4. Battery Compartment

Note: The sensor flashes 5 times and buzzer beeps 5 times when it's in low battery.

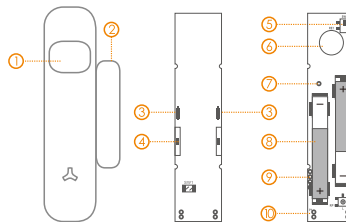
- Open the case and install the battery properly.
- Remove the strip from the reverse of the double sided tape and carefully mount the transmitter and the magnet.
- Make sure your chosen position is clean, free from dust or moisture and away from areas with a large quantity of metal or electric wiring.
- It will cause an immediate alarm if the magnet is departed from the transmitter more than 2cm in arming status.

### Horizontal Installation



## Wireless PIR Motion Detector & Door/Window Sensor

### Appearance:



1. Detection Window
2. Magnet
3. LED Indicator
4. Reed Switch
5. Tamper Switch
6. Infrared Sensor
7. RF antenna
8. Battery Compartment
9. Software Upgrading Terminal Block
10. Connector for Wired Sensors (N/C)



Note! The door sensor is set in Normal Zone 1 as default. It will cause immediate alarm if the magnet departs from the transmitter more than 2cm in arming state.



### LED Indicator:

- LED flashes once every 2 seconds: PIR warming up.
- LED flashes once every 3 seconds: Lower battery, please replace the battery (AAAA LR61).
- LED flashes once every 1 second: Detecting alarm/tamper alarm.

### Tamper Switch:

Once the case is opened, the tamper switch will be triggered.

### PIR Working Mode:

#### Test Mode:

When powered on, PIR starts to warm up, LED backlight flashes for 15 seconds to enter the testing mode. In this mode, Any motion will set off an alarm until it detects movement 5 times.



#### Sleep Mode:

When the test mode has finished, the motion detector will switch to the working mode and, once it has detected the motion, the detectors goes to the sleeping mode in order to save energy. The sleeping mode is terminated after 3 minutes. This consumes considerably less energy while there are people in house or apartment when it is not necessary to detect every motion. In case of an alarm, the first movement is enough to trigger an alarm.

Any movement detected within 3 minutes, the PIR will extend the sleep time by another 3 minutes.

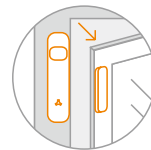
### Walk Test:

1. After warm-up, PIR enters into working state.
2. Walk across detection area and watch the LED indicator to make sure it flashes once when detecting the movement and send signal to the alarm panel.



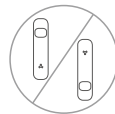
### Door/Window Working Mode:

The Door/Window Sensor can be installed on doors, windows and any other objects that open and close. The sensor transmits signal to control panel when the magnet mounted near the sensor is moved away. The tamper protection ensures that sabotage attempts to move the sensor will result in an alarm activation.

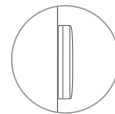


### Detection Mode & Area:

#### Front View



#### Side View

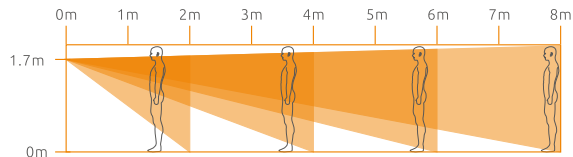


#### Top View



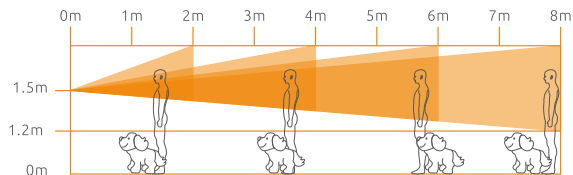
## Normal Mode:

It's recommended to mount it at the height of 1.7m from the ground. Detection range is 90 degree, with 8 meters range.



## Pet-immunity Mode:

It's recommended to mount it at the height of 1.5m from the ground and put the lens upside down for pet immunity. Detection range is 90 degree, with 8 meters range. Height limit for animal is 1.2 meters.



## Connect the Wired Output Interface:

There are two terminal blocks can connect any N.C output wired sensor.



## Notice:

1. Avoid mounting the detector close to places where heat changes fast or air stream flows frequently. (ie. air conditioner, tube light, oven, waver, refrigerator etc.)

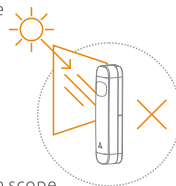
2. Avoid it facing to window which can be easily interfered by complicated environment. (ie. sunlight, crowds, or flowing cars etc.)

3. If two detectors are installed in the same detection scope, please adjust the location to avoid interference and false alarm.

4. Place the transmitter in the desired location, mount the magnet no more than 1cm away from the transmitter.

5. Avoid mounting sensors in areas with a large quantity of metal and electric wiring.

6. The product can reduce the possibility of accident, but the user is advised to take all necessary precautions for the safety and the protection of the property.





## App Setup

### Mobile App Download

Please enter keyword **"Smart Life"** on your smart phone to download the App from the Apps store or Google Play.



Smart Life

Wi-Fi Network: 2.4GHz (802.11 b/g/n).

iOS Requirements: iPhone 4S or newer running iOS 8 or higher.

ANDROID Requirements: Android 4.0 or newer.

### Create an Account

Tap on **"Register"** and follow these steps to create an account for your devices.

## Add Device

1. Tap on **"Add Device"** or **"+"**. Tap on **"Security & Sensor"** and choose **"Alarm System (Wi-Fi)"**

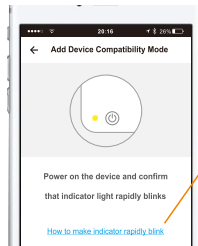


Add device



Alarm system (Wi-...

2. Turn on the device and confirm that **"backlight"** of the device flash in red quickly.

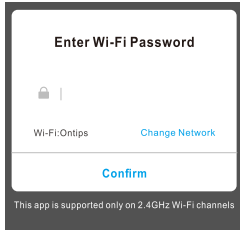


How to make backlight flash in red quickly?

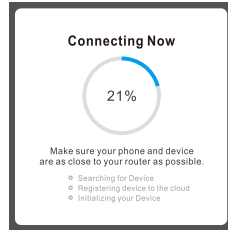
\* Turn on the device, then press the enroll/reset button for 5 seconds



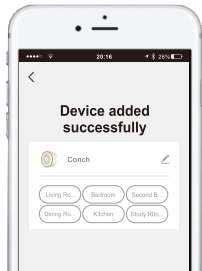
3. After confirmed the LED rapidly blink, enter your Wi-Fi password.



4. Waiting for seconds while connecting.

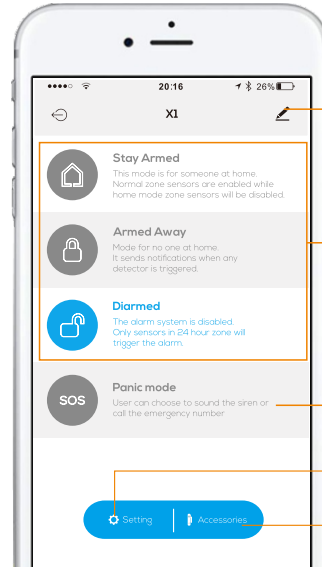


5. Device added successfully. Then you can rename the device and choose where you place the device.



## Alarm System Interface

Tap on device "Conch", enter the device interface.



Basic information about the device

Alarm system operation

Panic mode

User can choose to sound the siren

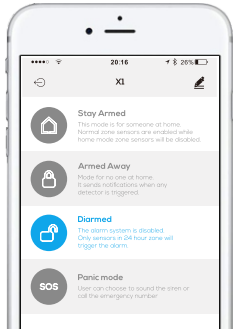
System Setting

Accessories Management  
Add/Delete/Edit accessories



## Quick Alarm Operation

1. Operation through the APP



2. Operate through the Remote Control (Press and hold the buttons for about 1 sec.)



### Arm

Mode for no one at home. It sends notifications when any detector is triggered.



### Stay Arm (Home Mode)

This mode is for someone at home. Normal zone sensors are enabled while home mode zone sensors will be disabled.



### Mute Mode

Press **home mode** button, then press **arm** or **disarm** button within 3 seconds to enter into arming or disarming state in mute mode without disturbing someone.



### Disarm

The alarm system is disabled. Only sensors in 24 hour zone will trigger the alarm.



### Emergency Call

User can choose to sound the siren or call the emergency number.



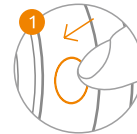
## Accessories Management

Tap on "**Accessories**" icon enters into accessories menu, users can enable/disable, add/delete different accessories. It's highly recommended to set the zone name to recognize the location when it's alarming.

### Add Accessories

Accessories in the standard kit were enrolled by default. More accessories can be paired in two ways.

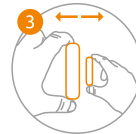
Press the enroll button once and follow the below steps, press the button again to exit the enrollment mode after accessories being added.



By enrolling button

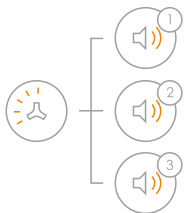


Press any button on the remote control.



Move two parts away or close

Or tap on "Sensors" or "Remote Control", then press "+ Add" on the APP, and follow the instructions. And press "X" to exit the enrollment mode.



1 System beeps once, the LED light flashes once, the enrollment is successful.

2 If system beeps twice and the LED light flashes once, the accessories have been enrolled before.

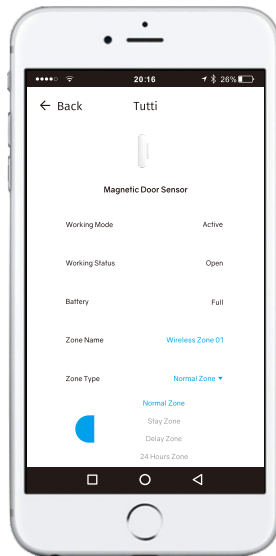
3 If three beeps are heard and LED light flashes once, the storage is full.

(Note! Please don't press tamper switch to enroll or enroll accessory in low battery status.)

## Delete Enrolled Wireless Accessories

Delete accessories via APP or Press the enroll button 7 times until one beep is heard, all enrolled wireless accessories will be deleted.

## Zone Setup



### Normal Zone

The alarm is activated immediately when triggered.



### Delay Zone

It allows a delay before entry or exit especially for sensors in single delay zone. But accessories in normal zone, home mode zone, and 24H zone will not be delayed.



### Stay Zone

Press "🏠" button, sensors in home mode zone are disabled then the users can move freely. While the sensors in normal zone will still activate an immediate alarm when triggered.



### 24 Hour Zone

No matter what state the alarm system is in, the accessories in 24 Hour zone are triggered, the control panel will get the signal and alarm immediately.

 : Full power,  : Low Battery



## Device Setup

Tap on "  ", enter the setting interface.



### Alarm Duration Time

User can set the siren duration from 0s to 300s, the device will be in mute when user set it 0s.



### Schedule

Schedule the arming and disarming of your security systems at your convenience. Time tolerance may be about +/- 30 seconds.



### Backlight LED

User can turn the LED on or off.



### Change Language

Select the device language as you want.



### Exit/ Entry Delay

Set exit/entry delay time for accessories in single delay zone. It allows users to leave or enter home within the programmed time without activating an instant alarm. Once entry/exit delay time is set, when system is armed, in case of delay time less than 10 seconds, control panel will beep twice every second. When the delay time is more than 10 seconds, control panel will beep once every 2 seconds, the sound will increase in tempo for the last 10 seconds for the "hurry up" notification. Once an entry is detected, it will allow the user to enter and disarm the system within the programmed entry time.



### Keyfob Arming/Disarming Alert

Get notified who is operating the system via keyfob.



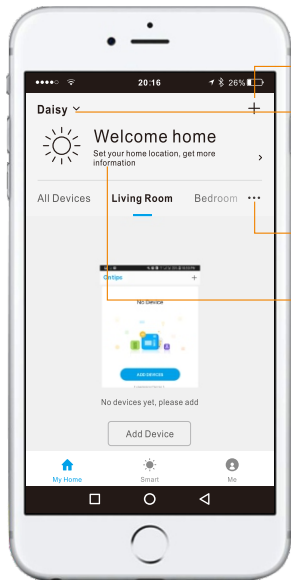
### Door Sensor Monitoring

If you leave a door or window open when you arm the system, the alarm will send a alert notification. User can check the real-time status of which sensor is "open" on the sensors list.



## Other APP Settings

### My home

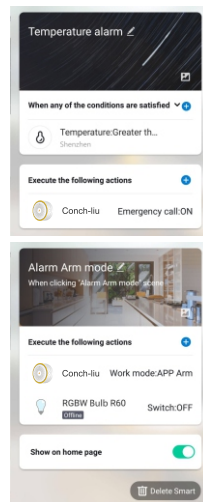
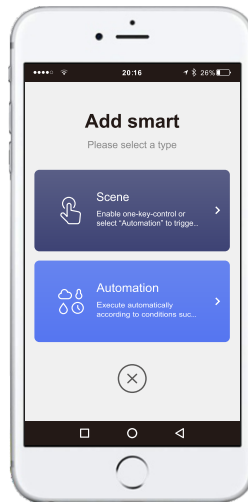


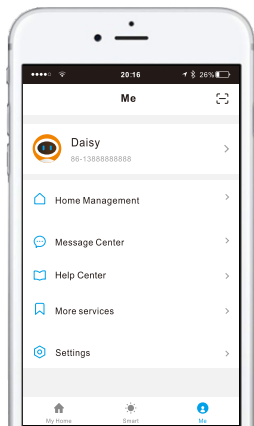
- Add devices
- Home Management  
Family settings: Name change/  
Room management/Family  
location/Share advice  
Add Family/Add rooms.
- Room Management  
Add/Delete/Edit rooms
- Set Home Location

## Smart

Tap on "Smart" to add smart scene or automation of your connected devices.

For example, arm the system, and turn off the smart bulb.  
Or disarm the system, and then turn on the smart bulb.  
Or to execute the actions according to different conditions. For example,  
when temperature greater than 40°C, trigger the alarm system.





## Settings

Sound: Turn on/off the sound of the key on APP.

Notification: Receive the push notification or not.

Sound



Push Notification



## Message Center

Check the activities of the system



Conch: System Disarmed.

2018-10-27 16:10:08



Conch: System Armed in Away Model

2018-10-27 16:09:54



## Help Center

Write down and send us your issues or complaints or any feedback and FAQ.



Submit Fault



Network Diagnosis



Suggestion



## More services

Add other services, like Alexa...



Alexa



GoogleAssistant



## Specifications

Product Name :	Two-way Portable DIY Wi-Fi Alarm System
Control Panel's Power Supply :	Input: AC 110~240V/50~60Hz
Built in Battery:	600mh/3.7V
Internal siren :	90dB
Allowed Amount of Expandable Wireless Accessories	10pcs remote controls 40pcs wireless accessories
Operating Frequency	2.400~2.4835GHz
Wi-Fi Standards	802.11b/g/n
Radio Frequency	433.2MHz, 433.9MHz, 434.4MHz
Housing Material	ABS plastic
Operating Condition:	Temperature: -10°C~55°C Humidity: ≤ 80%(non-condensing)
Size (Dx H) :	Φ80×41.7cm



## Specifications

Power Supply:	DC 3V (2pcs of AAAA, LR61 Battery)
Standby Current:	≤50 μA
Transmit Current:	≤39mA
Wireless RF Frequency:	433.2MHz, 433.9MHz, 434.4MHz
Temperature/Humidity:	-10°C-55°C/≤80% (Non-condensing)
Detector Dimensions(L x W x H):	21 x 90 x 18 mm
Magnet Dimensions (L x W x H):	10 x 45 x 11 mm



## Specifications

Power Supply:	DC1.5V (AA Battery)
Standby Current:	≤25 μA
Transmit Current:	≤70mA
Wireless Transmit Distance:	≤100m (in open area)
Wireless RF Frequency:	433.2MHz, 433.9MHz, 434.4MHz
Temperature/Humidity:	-10°C-55°C/≤80% (Non-condensing)
Detector Dimensions(L x W x H):	24.5 x 96.5 x 19.5 mm
Magnet Dimensions (L x W x H):	14 x 48 x 11 mm



## Specifications:

Power Supply:	DC 3V (1pc CR2032 button cell batteries)
Transmit Current:	≤25mA
Wireless Transmit Distance:	≤100m (in open area)
Transmitting Frequency:	433.2MHz, 433.9MHz, 434.4MHz
Housing Material:	ABS plastic
Operating Condition:	Temperature: -10°C~55°C Humidity: ≤ 80%(non-condensing)
Dimension (L/W/H):	35x70x12 mm



## Frequently Asked Questions

### 1. Is it possible to expand more accessories for this alarm system?

Yes, 40pcs sensors and 10 remote controls can be expanded according to users' need. Full range of accessories will be offered including PIR motion sensors, door sensors, vibration sensors, flood sensors, keypads, sirens and premiere protection beams & fences, environmental sensors like smoke detectors, please refer to details of Accessories.

### 2. What happens in case of alarm?

The system will alarm immediately, and Wi-Fi alarm sends you the push notification directly to your mobile Apps.

### 3. What internet connection do I need for Wi-Fi system?

All contemporary Wi-Fi standards on 2.4 GHz are supported. Network speed can influence the system performance. It is recommended to use a fast and well-functioning Internet connection for optimum performance.

### 4. Do I have to pay for a app?

All available Smart Life Apps are free to download (App Store or Google Play). The complete functionality is free.

#### 5. How to download the app for Wi-Fi alarm system?

Go to App Store or Google Play to download the application by entering the keyword of "Smart Life".

#### 6. Is Smart Lift App suitable for all mobile phones?

On all smartphones with a recent version of an iOS or Android operating system, Apps are available for download and use. For this functionality, depending on the system, a mobile connection or mobile Internet / Wi-Fi connection is necessary.

#### 7. What's the maximum range between the control panel and accessories?

It's 100 meters in open area. The walls might shorten the distance, it's recommended to install the accessories at the right place, and move the panel to adjust a better signal receiving. If the house is too large, it's better to add a signal repeater to boost the coverage.

#### 8. Will my alarm system work in the event of a power failure?

Yes, They system has rechargeable back-up batteries which can support it working for 8 hours. When the power is recovered, the battery will be recharged.